



Design and Construction of  
Redevelopment of Queen Mary Hospital, Phase 1  
at Pok Fu Lam Road, Hong Kong

CONTRACT NO: SS F501 (PWP NO. 70MM)

## Green Contractor Award 2022



PAUL Y. - ABLE JOINT VENTURE



**1. Mitigation Measures**

**a Noise Pollution Mitigation**

**b Air Pollution Mitigation**

**c Waste Mitigation**

# a Monitoring – Considerate Environmental System

## Noise Pollution Mitigation



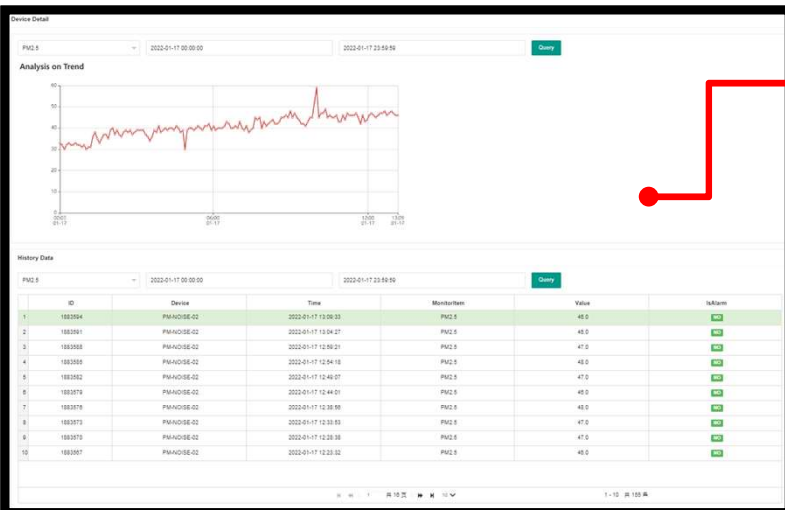
Adjacent to A&E of Block J



Adjacent to L0 of Block K



Monitored Items	Considerate Level	Action Level
Noise Level	65db	70db
PM <sub>2.5</sub>	90µg/m <sup>3</sup>	100µg/m <sup>3</sup>
PM <sub>10</sub>	65µg/m <sup>3</sup>	75µg/m <sup>3</sup>



**"Considerate Environmental System"**, which includes noise & dust IoT sensors, is installed to **ensure "nuisance-free construction"**. Noise level and concentration of particulates in air would be **full-time monitored at cloud-based platform and feedback in Care and control center**. Alert would be issued if any detected figures exceed the preset standards.



## Air Pollution Mitigation

### b Wide Adoption of Dust-Free Appliance During Dusty Works



Wireless and dust-free electrical appliances, i.e. connected to bag filter, are widely adopted on site and must be used for dusty works, e.g. timber formwork fabrication.



## Waste Pollution Mitigation

### C Aluminium formwork to reduce use of timber formwork

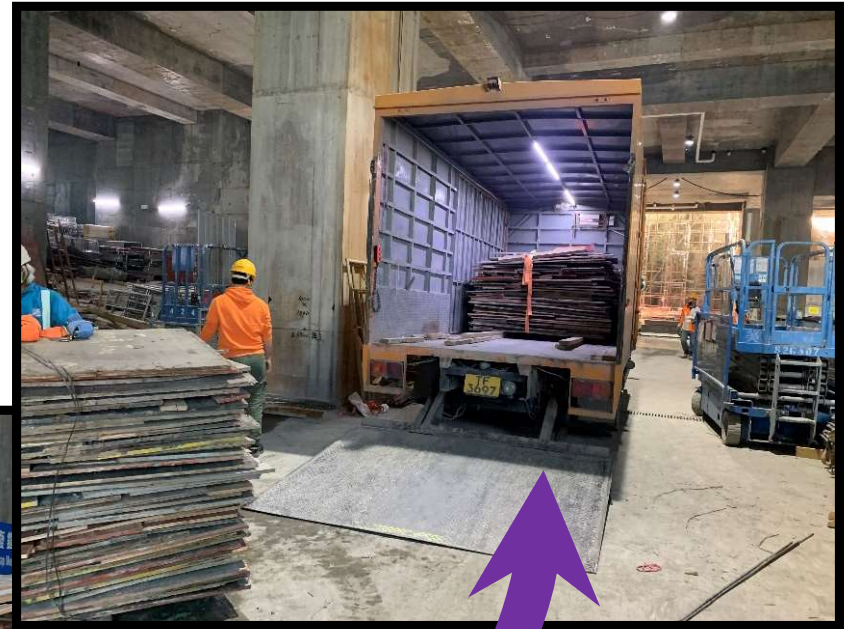


Fully application of **aluminium formwork** to greatly reduce the waste of timber.





**Waste Pollution Mitigation**  
**C Timber Recycling**  
**From Superstructure Works**



**Sort**

**RECYCLE**

**Unusable Timber** is collected and recycled for using e.g. fuel, recycle wooden floor tile, of other sustainable projects



## Waste Pollution Mitigation

### c Housekeeping and 5S Management of Construction Materials



Sorting facility is provided in order to facilitate the reuse of the formwork accessories including couplers and plastic wall tie. Thus, the wastage of such material can be effectively reduced.



# Waste Pollution Mitigation

## c Provision of Adequate Water Station to Workers

Aim: **AVOIDANCE** of using



Mobile Water Stations have been provided on **Working area and LO**

Bluewater® Station, which provides **purified water** (i.e. **reduced 99% contaminants**) to the workers, has been installed and operated on-site.

